

From the Walt Disney/Pixar Film CARS
Recorded by RASCAL FLATTS

Life Is a Highway

Arranged by
ALAN BILLINGSLEY

For SAB* and Piano
Performance Time: Approx. 3:20

Words and Music by
TOM COCHRANE

Rock ($\text{♩} = 102-104$)
N.C.

Piano

f

f

F#m E D

D A E D A E F#m E D

Soprano

Alto

Baritone

Life's *mf*

A D A E D A E

*Available for SATB, SAB and 2-Part
ShowTrax CD also available



13

like a road — that you trav - el on, — when there's one day here — and the next — day gone. Some-

D(no 3rd) A(no 3rd)

mf

13

times you bend, — some-times you stand, some - times you turn — your back to the wind. There's a

Unis. *mf*

E(no 3rd) D(no 3rd)/E E(no 3rd)

15

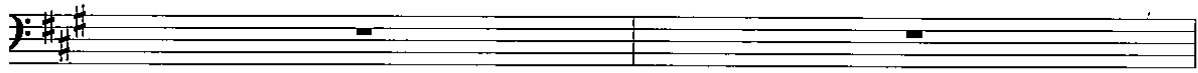
world out - side — ev-'ry dark - ened door, where blues won't haunt you an - y - more. Where the

D(no 3rd) A(no 3rd)

17



brave are free — and lov-ers soar, come ride with me to the dis - tant shore.



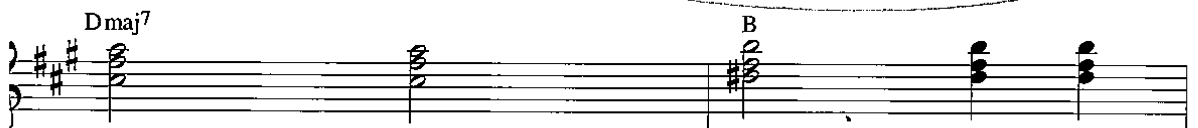
21



We won't hes - i - tate — to break down the gar - den gate. —



There's not much time — left to - day - (yay). —



f Unis.

Life is a high - way; I wan-na ride — it all — night long. —

f

F#m E D A D A E

25

f Unis.

If you're go - in' my — way; I — wan-na drive — it all —

D A E F#m E D A

28

mf

— night long. — *mf*

Through *mf*

D A E D A E

31

all these cit - ies and all — these towns, — it's in my blood — and it's all a - round. I

D (no 3rd)

A (no 3rd)

love you now — like I loved you then. This is the road — and these — are the hands. From

E (no 3rd)

D (no 3rd)/E E (no 3rd)

Mo - zam - bique — to those Mem - phis nights, the Khy - ber Pass — to Van - cou - ver's lights.

D (no 3rd)

A (no 3rd)

Unis.

Knock me down, — back up a-gain; — you're in my blood, — I'm not a lone - ly man.

E(no 3rd) D(no 3rd)/E E(no 3rd)

39

41

f

There's no load I can't hold. The road's so rough, — this I know. —

f

F#m E

41

I'll be there — when the light comes in. — Tell 'em we're — sur-vi - vors. —

Dmaj7 B

43

45

f Unis.

Life is a high - way; I — wan-na ride — it all — night long. —

f

F#m E D A D A E

f

Unis.

If you're go - in' my — way; I — wan-na drive — it all —

D A E F#m E D A

53 Growing with intensity *mf*

— night long. —

Growing with intensity *mf* There was a dis -

D A E D A E Bm7

mf

- tance — be - tween you — and I;

D F#m E

54

a mis - un - der - stand ing — once, but now

Bm7 D

57

Unis.
we look it in the eye.

F#m Esus

59

62

Unis. *f*

There's no load I can't hold. The road's so rough, this I know.

F#m E

62

I'll be there when the light comes in. Tell 'em we're survivors.

Dmaj7 B

64

67

Hand Claps

Life is a high - way; I wan-na ride - it all -

F#m E D A

66

continue Hand Claps through m. 73

— night long.— If you're go - in' my — way;

D A E D A E F#m E D

69

Unis.
I — wan - na drive — it all — night long.—

A D A E

72

stop Hand Claps
Unis. 75

Gim-me, gim-me, gim-me, gim-me, gim-me, yeah! Life is a high - way;

D A E F#m E D

74

Unis.

I — wan-na ride — it all — night long. — If

A D A E D A E

76

Unis.

you're go - in' my — way; I — wan-na drive — it all — night long. —

F#m E D A D A E

79

Unis. long fall

Gim-me, gim-me, gim-me, gim-me, gim-me, yeah!

D A E F#m

ff

82

LIFE IS A HIGHWAY - SAB

